



Video Specifications

Projector:

Panasonic PT-EZ580 (5400 Ansi Lumen, 1920x1200)

Screen:

Electric Screen 4.00m – 4.00m

Computer:

PC I9 11900X 10 core, 32GB Ram, RTX

A4000, Decklink Duo 2 x 2

Macbook Pro M3

Software:

Resolume Arena 7

vMix 28

*For further technical information on video please contact boyd@p60.nl
For details on projector placement please see page 3 of this document.*

P60

Recording Video

Cameras:

4 x Canon CR-N500 PTZ

-See 'P60 Video Positions' for details of placement in venue

1 x Canon RC-IP100 PTZ controller

1 x Datavideo HDR-90 Prores Video recorder for ISO recording of Canon PTZ

1 x Panasonic GH5/ Panasonic Lumix G Vario 12-35mm f/2.8 II

2 x Panasonic GH5 Mark II/ Panasonic Lumix G Vario 12-35mm f/2.8 II

Olympus M.Zuiko Digital ED 40-150 f/2.8 PRO

All cameras can be connected to a recording/livestreaming PC on the balcony in the main hall. Livestreaming and editing is possible.

Usage of additional equipment, rigging, tripods and microphones is possible, please contact production for pricing and availability.

Additional audio recording possibilities:

Tascam Portacapture X8 L/R + ambient mic

Multitrack recording

Use of equipment is part of different available recording packages, please contact production for more information regarding different recording solutions and their prices.

Note: All recorded material can be downloaded by the customer through a service or be delivered on a hard drive provided by the customer. P60 offers several recording packages with and without edited video. For mixing/mastering audio please contact us for more information.

For further technical information on video please contact boyd@p60.nl

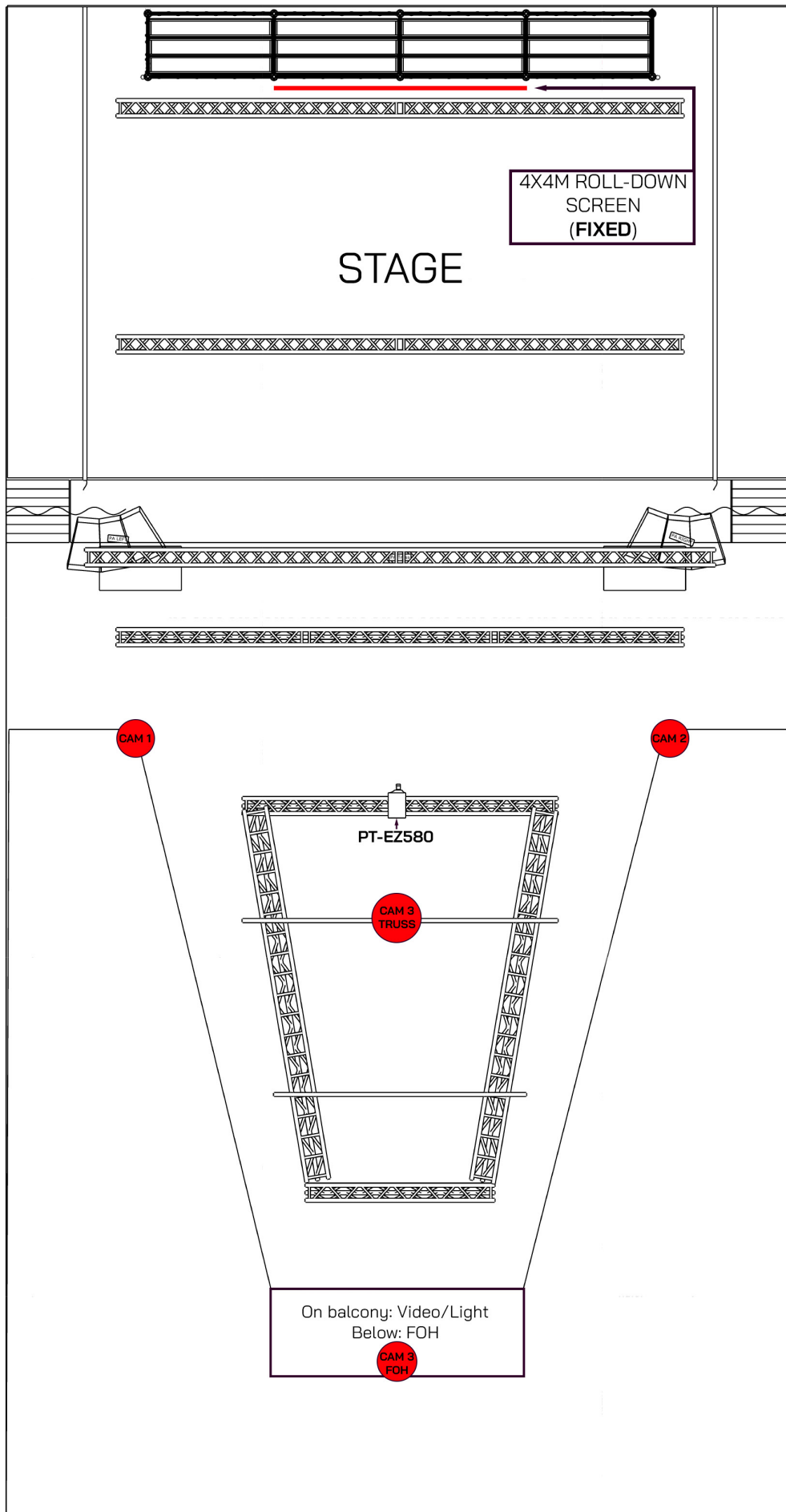
Symbol key

 PT-EZ580 (1)

1 x Panasonic PT-EZ850 Projector

 CAM 1

4 x Canon CR-N500 PTZ



Project	P60
Project location	Stadsplein 100A 11812M Amstelveen
Drawing author	Dion Plasmeijer

P60 VIDEO SPECS

PROJECTORS: Panasonic PT-EZ580
16:10 (WUXGA) 1920x1200
5400 ANSI Lumen

Projector is pictured in position for use with stage screen.

CAMERAS: Canon CR-N500
3G-SDI Pan/Tilt/Zoom Camera with 15x optical zoom

Camera 1 and 2 are fixed positions. Camera 3 can be moved on request between FOH and truss positions. A 4th CR-N500 is available and can be freely positioned on stage, in the hall or mounted in truss.

All 4 PTZ cameras can be recorded individually through a Datavideo HDR-90 up to 1080p60 in Prores 422 codecs (Proxy, LT, 422, HQ) or as a live edit through vMix 28 (extra cost will be charged for a camera operator/switcher if necessary)

It is also possible to setup a livestream through any compatible platform.

For more information regarding video and projection possibilities:
boyd@p60.nl